

# PANAMA CHOCKS

## Single Point Mooring Chock Type A JIS F2030-78



**Material:**

Cast Steel JIS G5101 or ZG230-450 or equivalent

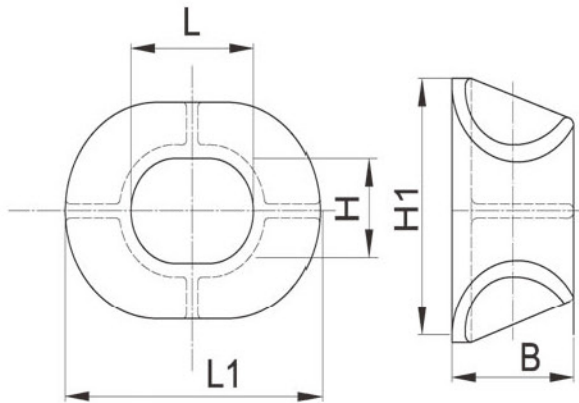
**Surface Treatment:**

Sand Blasting to SA2.5+ one coat epoxy zinc rich primer

**Heat Treatment:**

Full Annealing

**NOTE:** Casting surface should be no sand burning crack, shrinkage cavity, pits, sand layer or any other defect that influence the strength and appearance. All the edges to be rounded and region that contact with rope must be smooth.



Type	L	L1	H	H1	B	Dia. Of Applicable Chain & Cable			Weight (Kg)
						Chain	Wire Rope	Synthetic Fiber Rope	
400	400	780	300	680	350	50~60	30	80	210
500	500	940	400	840	400	62~73	40	90	340
600	600	1100	450	950	450	76~92	50	100	490
700	700	1260	500	1060	500	95~114	60	110	600
800	800	1420	600	1220	550	117~132	70	120	880

**Qingdao Seakong Marine Machinery Co.,Ltd**

No. 19 Qutangxia Road, Shinan District, Qingdao City, China

Tel. +86 532 89922862 Fax. +86 532 89922862

Email: [sales@seakongmarine.com](mailto:sales@seakongmarine.com) Web: [www.seakongmarine.com](http://www.seakongmarine.com)