

PANAMA CHOCKS

Bulwark Mounted Panama Chock DIN 81915



Material:

Cast Steel GS-38.3 DIN1681 or ZG230-450 or equivalent

Surface Treatment:

Sand Blasting to SA2.5+ one coat epoxy zinc rich primer

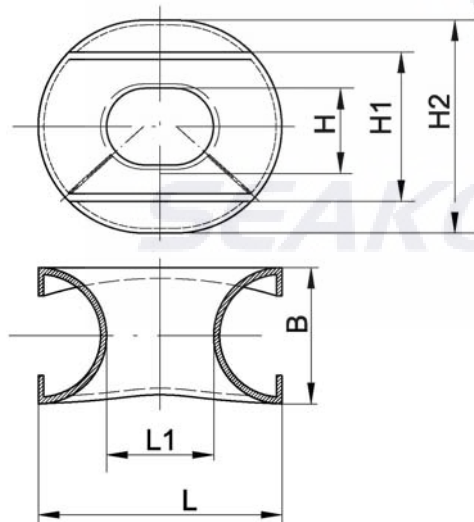
Heat Treatment:

Full Annealing

NOTE: Casting surface should be no sand burning crack, shrinkage cavity, pits, sand layer or any other defect that influence the strength and appearance. All the edges to be rounded and region that contact with rope must be smooth.

Type A2~A8: Single Chock Acc. To Panama Rules

Type A12~A32: Double Chock Acc. To Panama Rules



Type	SWL (KN)	H	H1	H2	L	L1	B	Weight (Kg)
A2	20	115	225	315	360	160	200	26
A3	30	140	275	390	450	200	250	42
A5	50	180	340	480	550	250	300	74
A8	80	225	415	585	680	320	350	120
A12	125	270	500	710	840	400	440	185
A20	200	320	595	840	1020	500	520	285
A32	320	400	800	1100	1300	600	700	795

Qingdao Seakong Marine Machinery Co.,Ltd

No.19 Qutangxia Road, Shinan District, Qingdao City, China

Tel. +86 532 89922862 Fax. +86 532 89922862

Email: sales@seakongmarine.com Web: www.seakongmarine.com